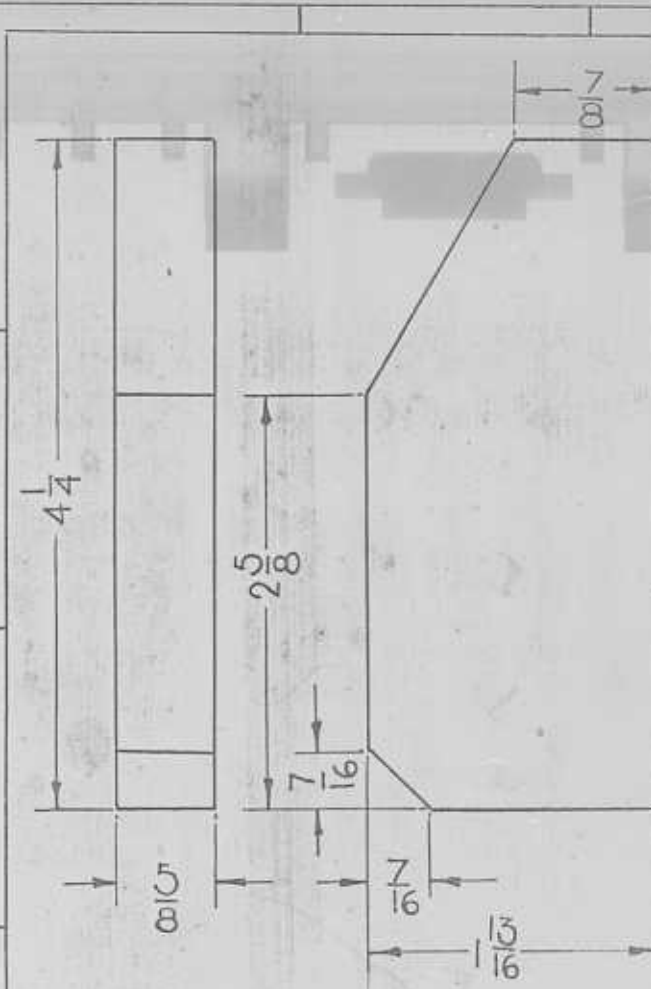


DESIGN BASED ON



ALT. NO.	ALTERATIONS.	INITIAL
(ZD)	REMOVED 1/16 x 1/16 CHAMFER (DCN I/B.G/62/53)	RE
(ZDA)	SUPERSEDES PART NO-10198519 REF-DCN. ENG 101/B.G/79/7/13/14/79	10/1/79

RE-AFFIRMED
18.1.57
 By: **SME/D**
 ISSUING AUTHORITY: BDO/REC 1 RB S

(ZD)

MIF
 SQAM

ALL DIMENSIONS ARE IN INCHES.
 IF TOLERANCES NOT STATED FRACTIONAL MACHINING DIMENSIONS ALLOW ±.010
 DO NOT SCALE THE PRINT.

ALL CUT SURFACES ^{100%}
 DIMENSIONS SHOWN DO NOT INCLUDE ALLOW. FOR CUTTING OR WELDING SHRINKAGE.

NO.	OFF	DESCRIPTION	ITEM	REF. DRG.	STEEL PL.	54P40	
					MATERIAL	SPECIFICATIONS	
			SUPERSEDED BY.			<i>Chirp</i>	
	12	10021012	SUPERSEDES.			23. APRIL '68	
	14	30020019			A.D.E.	D.E.	
RIB (SIDE SHEET TO CAMSHAFT BRG) WELDED CYL-BLOCK					<i>R. Sandhu</i>	23 rd April 68	CDM.
					<i>John</i>	22 nd April 68	CHD.
					<i>Armed</i>	22-4-68	TRD.
							DRN.
					SCALE: 12" = 1 FT.		
DIESEL LOCOMOTIVE WORKS VARANASI.					DRG. NO. 31D 71498.		
					PART NO- LINE-1- 10191008 LINE-2-		

12 CYL. VEE ENGINE
 16 CYL. VEE 251-B

R 1
 DIESEL LOCOM WORKS
 VARANASI

2